

# BUDGETING/FORECASTING

## OUR COMPLETE FINANCIAL SUITE INCLUDES:

### Flagship Financial Management Product:

Navigator – designed for nonprofits, international NGO's and the public sector.

### Navigator Extended Product Suite:

AwardVision Plus  
CommunityCare  
Deposits and Loans  
DonorVision  
Human Resources/Payroll  
MinistryView  
Portals

### Navigator Functional Areas:

Advanced Allocations  
Budgeting/Forecasting  
Fixed Assets  
Core Financials  
Inventory  
Procurement  
Sales Orders

### Navigator Suite Key Product Features:

Multi-Currency  
Multi-Language  
Integrated Excel Report Writer  
Financial Reporting  
    Excel Consolidated  
    Export Tool  
Workflow Management with Approvals  
Microsoft Office Integration

Real life, real time budget management means no surprises. Your organization invests countless hours planning, setting priorities and establishing budgets. But do you ever really know how many dollars went where and which dollars were spent most effectively?

The Serenic Navigator Budgeting/Forecasting solution makes it easy; helps make every dollar count. Fully integrated, Budgeting/Forecasting matches budget actuals with budget forecasts, making sure you know where your budget is going and that it's all money well spent. Plus, you can be confident that your organizational and funding source financial requirements are completely enforced.

## KNOWLEDGE IS POWER

Serenic Navigator Budgeting/Forecasting shows you any time in real time exactly where your budget stands. Look at all it allows you to do:

- Create transaction based budgets
- Set up multi-year budgets allowing budget tracking across fiscal years
- Roll-up budgets and actual activity by account groups, user defined dimensions, and self-balancing funds
- Integrate with budget approvals and workflow notification
- Set up budgets based upon daily, weekly, monthly, quarterly, and annual allocations
- Base purchasing decisions on available cash instead of budgets by using same budget checking functionality to compare actual expenses to cash balances
- Integrate with AwardVision, Serenic's grant management software, for tracking of grant budget and actual activity
- Integrate with Microsoft Excel for both budget imports and exports
- Track remaining budget online in real time
- Scan in supporting documentation using Matriks Document
- Create budget rules that enforce both individual account activity and cumulative activity across a group of accounts
- Establish tolerances for budget checking, for example, a certain type of expense can exceed the budget by 25%
- Set up overlapping budget rules that limit spending by specific accounts and by the entire grant
- Establish budget rules that take into account commitments, encumbrances and actual expenses; as well as transactions that have not been posted
- Allow users to review or approve the transaction and drill down to the specific transaction

# BUDGETING/FORECASTING

## HOW DOES SERENIC NAVIGATOR BUDGETING/FORECASTING DO ALL THIS? SEE FOR YOURSELF.

**Q:** How does Serenic Navigator Budgeting/Forecasting support transaction-based budgets?

**A:** You can create zero-based budgets and/or create budgets based on history or by copying budgets from existing activity.

**Q:** How does Serenic Navigator Budgeting/Forecasting handle budgets across fiscal years?

**A:** You can create budgets that flow across any period of time, and have complete access to all transactions, even after the fiscal year closing process.

**Q:** How does Serenic Navigator Budgeting/Forecasting improve your audit experience?

**A:** Navigator Budgeting/Forecasting provides instant review and access to all financial transactions, including the ability to view and report on any field or group of fields in the system.

Posting Date	Document Type	Document No.	G/L Account No.	Fund No.	Description	Amount	User ID	Department Code	Project Code	Source No.
08/08/08	Invoice	PPI00110	5220 BOARD	5220 BOARD	Computer Supplies	100.00	CFO	1050 HEALTH		DV-V10001
08/09/08	Invoice	PPI00111	5220 BOARD	5220 BOARD	Computer Supplies	35.00	CFO	1050 HEALTH		DV-V10001
08/06/08	Invoice	PPI00109	5340 BOARD	5340 BOARD	misc Bus Tickets	450.00	CFO	1050 EDUC		DV-V10001
08/08/08	Invoice	PPI00108	5340 BOARD	5340 BOARD	Travel Expense	345.00	CFO	1050 EDUC		DV-V10001
12/15/09	Invoice	PPI00112	5340 BOARD	5340 BOARD	Travel Expense	25.00	CFO	1050 HEALTH		DV-V10001
07/09/08	Invoice	ELECT 7	5412 GENE...	5412 GENE...	The Electric Comp...	500.00	CFO	1110		
07/09/08	Invoice	ELECT 7	5412 GENE...	5412 GENE...	The Electric Comp...	500.00	CFO	1300		
02/15/08	Invoice	PPI00106	5432 BOARD	5432 BOARD	Maint Contract	1,200.00	CFO	1050 HEALTH		FM-V00006
02/15/08	Invoice	PPI00106	5432 BOARD	5432 BOARD	Maint Contract	1,500.00	CFO	1050 HEALTH		FM-V00006

# BUDGETING/FORECASTING

**Q:** How does Serenic Navigator Budgeting/Forecasting help increase efficiency?

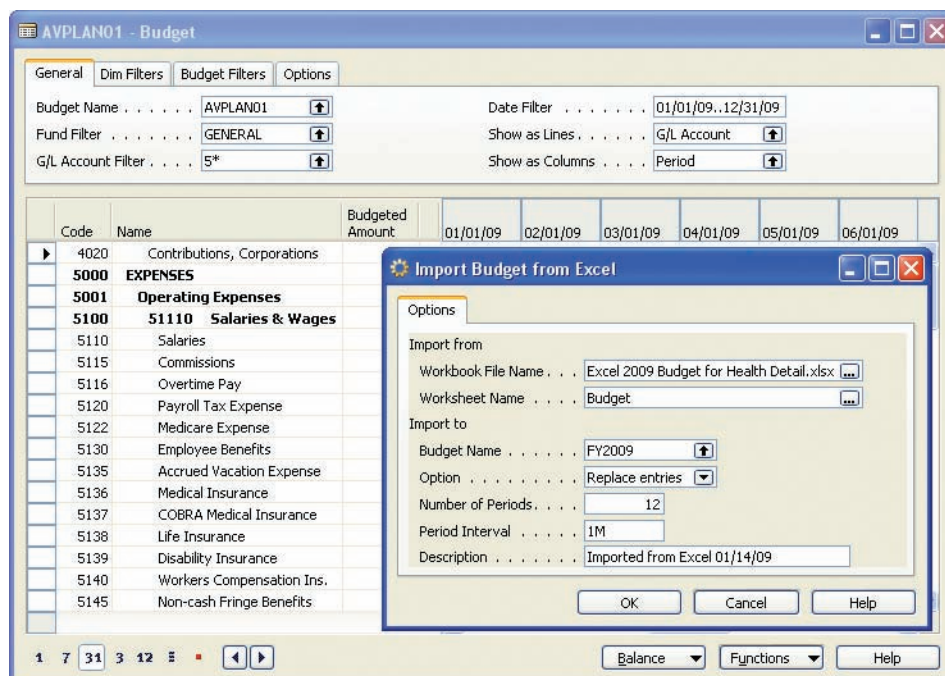
**A:** Navigator Budgeting/Forecasting integrates with budget approvals and workflow notification, increasing efficiencies within your organization.

**Q:** How does Serenic Navigator Budgeting/Forecasting enforce individual and cumulative activity?

**A:** Navigator Budgeting/Forecasting allows users to create budget rules that enforce both individual account activity and cumulative activity across a group of accounts. Budget checking gives the user the flexibility of budgeting at the individual account level, or groups of accounts, without losing detailed account activity.

**Q:** What are the benefits of integration with Microsoft Excel?

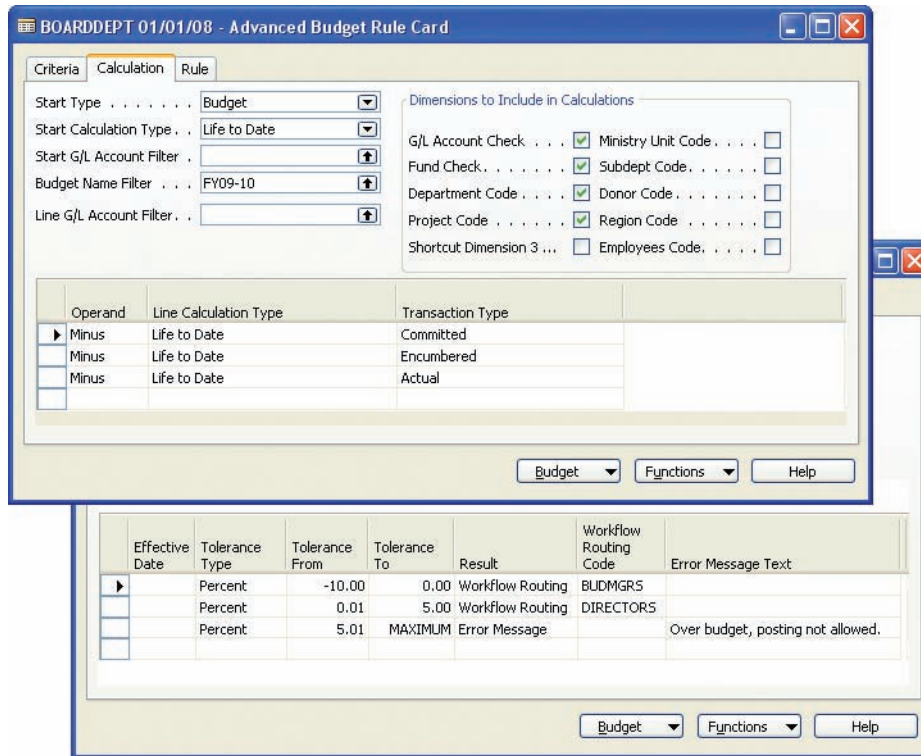
**A:** Immediate familiarity, plus it allows the user to export budget and actual transactions and import new budgets directly from Excel using system-generated budget templates.



# BUDGETING/FORECASTING

**Q:** How do the budget tolerances and rules work?

**A:** Navigator Budgeting/Forecasting allows users to set up tolerances for budget checking, alerting them when the tolerances are approached. Additionally, you can set up overlapping budget rules that limit spending by specific accounts and by the entire grant.



**Q:** How does Serenic Navigator Budgeting/Forecasting handle commitments and encumbrances?

**A:** You can selectively include any posted transaction, including Actual, Commitments, and Encumbrances, in the budget checking process. You can also include transactions that have been entered and not posted.

**Start benefitting from Serenic Navigator Budgeting/Forecasting today – real life, real time with no surprises. To learn more: Call 877.897.5265 or visit [www.esopro.com](http://www.esopro.com)**

An eSoftware Microsoft Dynamics solution gives you the tools you need to eliminate duplicate work, improve productivity, and do more with fewer resources.



Microsoft Business Solutions  
ISV/Software Solutions



eSoftware Professionals