

MEMBER BUSINESS  
SOLUTIONS



## Inventory Movement Worksheet

---

Owner of this document is: Scott Wiacek – [swiacek@feedingamerica.org](mailto:swiacek@feedingamerica.org)

### **Purpose of this document**

The scope of this document is **manual movements** via the Movement Worksheet.

Copyright © Feeding America 2014, All Rights Reserved.

This document may be printed and reproduced only by Feeding America and member organizations.

# Table of Contents

---

**PURPOSE..... 3**  
**WHEN TO USE THE MOVEMENT WORKSHEET ..... 3**  
**RELATED TOPICS:..... 7**

## Purpose

The Movement Worksheet allows for the movement of product from one Bin to another. Some common movements include Receiving to Putaway or Pick/Put; movement from Putaway to Pick Bin or movement to a hold bin. Movements can be entered manually or by calculating replenishment using the Movement Worksheet Warehouse Activity Plan (WAP) functionality.

The scope of this document is **manual movements**, which will be discussed as they relate to the *Items on Agency Orders Report* guidance or determined by other means. The Warehouse Activity Plan procedure document discusses calculating Pick Bin replenishment, facilitated by the Movement Worksheet. Movements can also be executed by the ADCS handhelds, and that process is described in that procedure. A full list is provided in Related Documents.

*Ceres object release 4.00.00 is required for the functionality documented in this procedure*

## When to use the Movement Worksheet

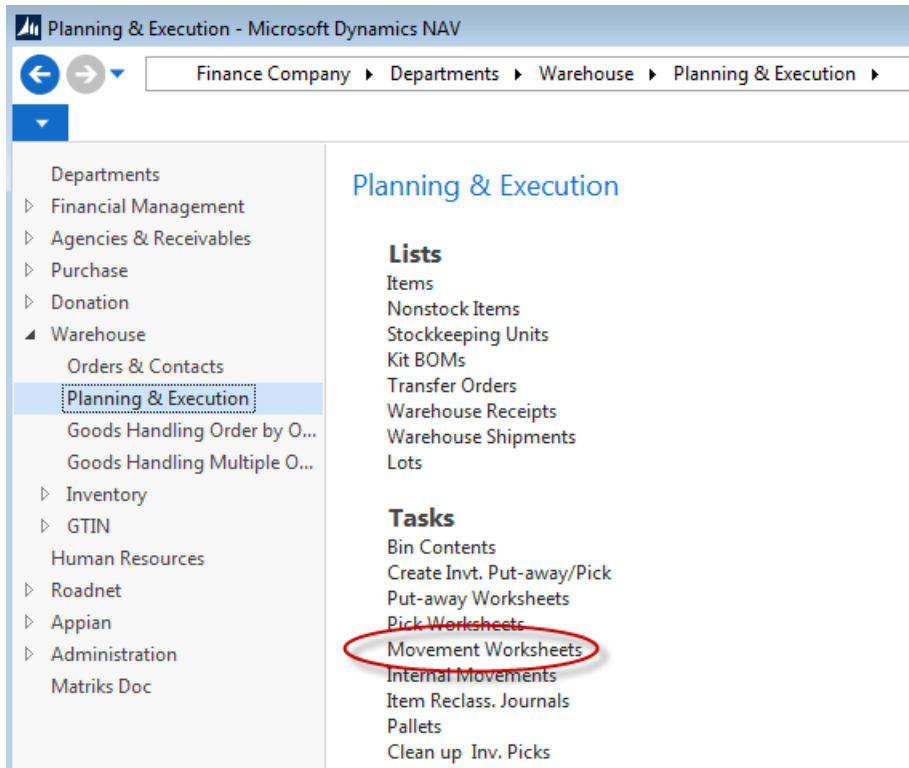
There are times when product needs to be moved to a Pick bin to fulfill the demand on orders for a specified shipment date. Once the orders have been released, this movement can be conducted using the Movement Worksheet. The movement of product for picks should only be completed for released orders for a specific shipment date, before Picks are created and printed. Otherwise you risk moving product from the Bin the Pick is indicating for that Item.

The Movement Worksheet page contains the worksheet in which you plan movements of inventory within the warehouse. The most routine movements you plan are the movements to replenish the bins with the fastest moving inventory. You can also create movements that would not normally be suggested by Ceres, even movements from a higher-ranking bin to a lower ranking bin.

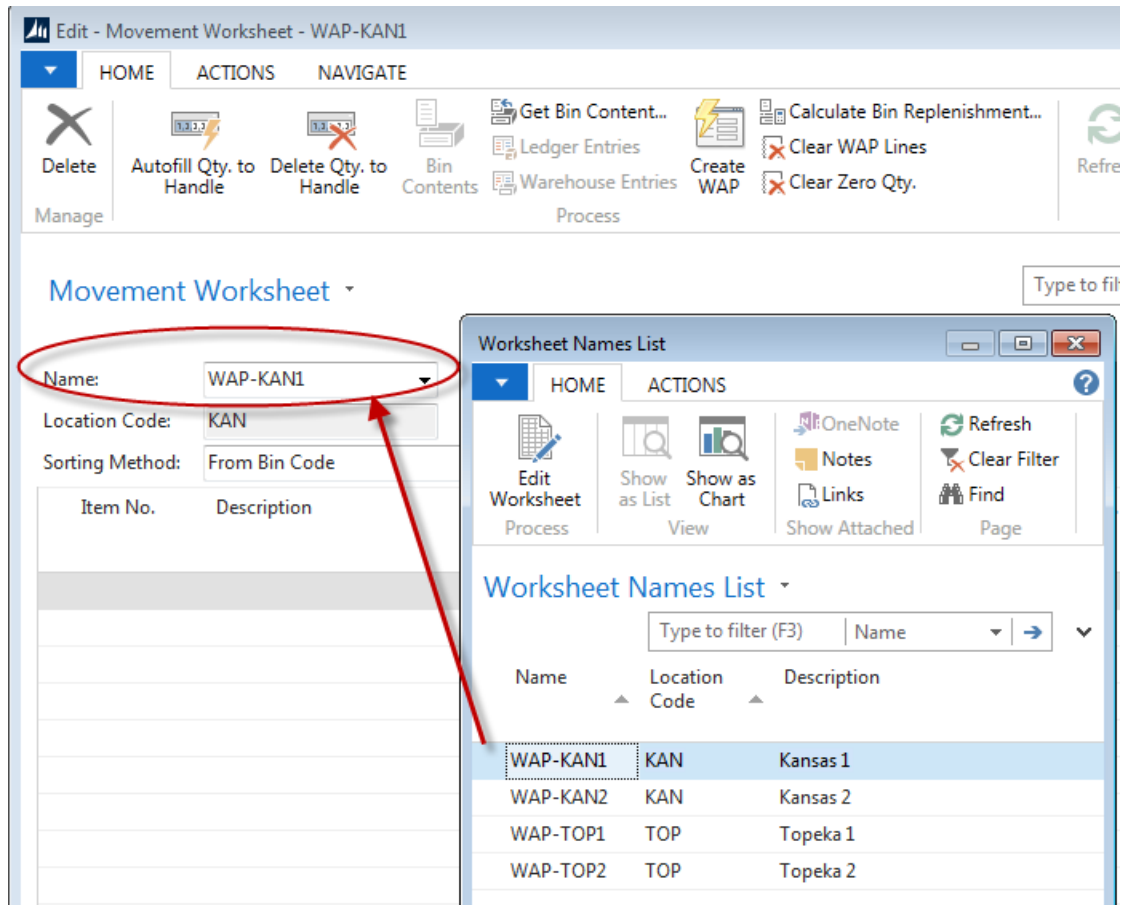
Before using the Movement Worksheet, a batch for each location that will be using Movement Worksheets must be created and linked to that location.

**Note:** Refer to the Movement Worksheet Templates-Batches' document for instructions.

1. The Movement Worksheet can be accessed from Departments → Warehouse → Planning & Execution → Tasks → Movement Worksheets.



2. Select a Movement Worksheet from the Worksheet Names list. Once you select a Worksheet Name, the Location Code will auto-fill based upon the Location linked to that worksheet template.



3. The **Sorting Method** field defines the way the worksheet is sorted. If you change the method, you change how the lines are sorted. The options are: <Blank>, Item, To Bin Code and Due Date.

**Note:** It is not necessary to select a Sorting Method unless desired.

4. Begin entering the items for movement (based upon the Items on Released Orders report). Once the Item No. is entered, the description will populate.
  - a. If the item is palletized, select the pallet to move, if not, select the Lot No.
  - b. Enter the From Zone Code and From Bin Code (or enter the From Bin Code and the From Zone Code will populate).
  - c. Enter the To Zone Code and To Bin Code
  - d. Enter the Quantity (to move) and the Qty. Outstanding & Qty. to Handle will populate.

Edit - Movement Worksheet - WAP-KANI

HOME ACTIONS NAVIGATE

Delete Autofill Qty. to Handle Delete Qty. to Handle Bin Contents Get Bin Content... Ledger Entries Warehouse Entries Create WAP Calculate Bin Replenishment... Clear WAP Lines Clear Zero Qty. Refresh Find

Management Process Page

Movement Worksheet

Type to filter (F3) Item No. No filters applied

Name: WAP-KANI  
 Location Code: KAN  
 Sorting Method: From Bin Code

Item No.	Description	From Zone Code	To Zone Code	Pallet No.	Full Pallet Order	Lot No.	From Bin Code	To Bin Code	Due Date
10018	Chocolate Syrup	DRY	DRY	1305-00250	No	LOT-02636	01-100-A	01-100-A	
10256	Snacks	DRY	DRY	1305-00082	No	LOT-02566	01-101-C	01-101-C	
10300	Cake Mix	DRY	DRY	1212-00454	No	LOT-01555	01-115-B	01-115-B	

5. Finish entering the lines to move the items and then click on Actions → Register Movements.

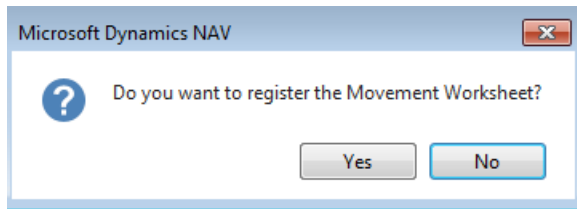
Edit - Movement Worksheet - WAP-KANI

HOME ACTIONS NAVIGATE

Autofill Qty. to Handle Delete Qty. to Handle Get Bin Content... Calculate Bin Replenishment... Calc. Inventory Replenishment Create WAP Clear WAP Lines Clear Zero Qty. Create Movement... Register Movements Worksheet... Items on Agency Orders

Functions Calculate Create Registering Print

Click Yes on the confirmation box to proceed. Registering posts the movement.



### Related Topics:

1. Bin Overview
2. Inventory Movement Worksheet Templates
3. Items on Released Agency Order Report
4. Warehouse Activity Plan – WAP
5. Warehouse Activity Plan and Default Bin Picking
6. Warehouse ADCS Barcode Processing