

## Using Dimension Combinations

---

Owner of this document is: Scott Wiacek – [swiacek@feedingamerica.org](mailto:swiacek@feedingamerica.org)

### **Purpose of this document**

This documents explains how to use Dimension Combinations in Ceres.

Copyright © Feeding America 2014, All Rights Reserved.

This document may be printed and reproduced only by Feeding America and member organizations.

# Table of Contents

---

**PURPOSE ..... 3**

**SETTING UP DIMENSION COMBINATIONS ..... 3**

**RELATED TOPICS: ..... 6**

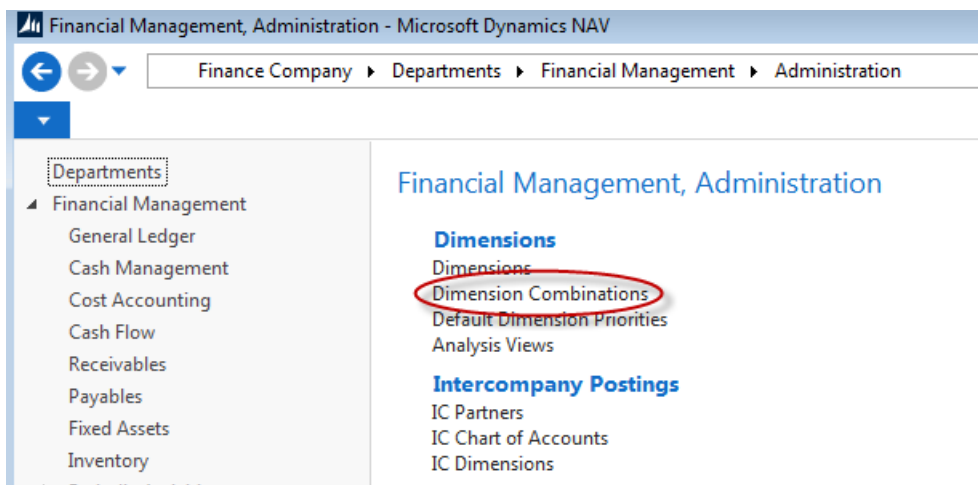
## Purpose

Dimension Combinations provide the ability to prevent (block) particular Dimensions from being combined on a journal or in a document, and under what circumstances. In addition, the use of a particular dimension combination can be restricted, depending on which Dimension Value Combination is being used for the two Dimensions. For example, a specific Project Code may not be valid or used in conjunction with specific Department Codes or vice versa.

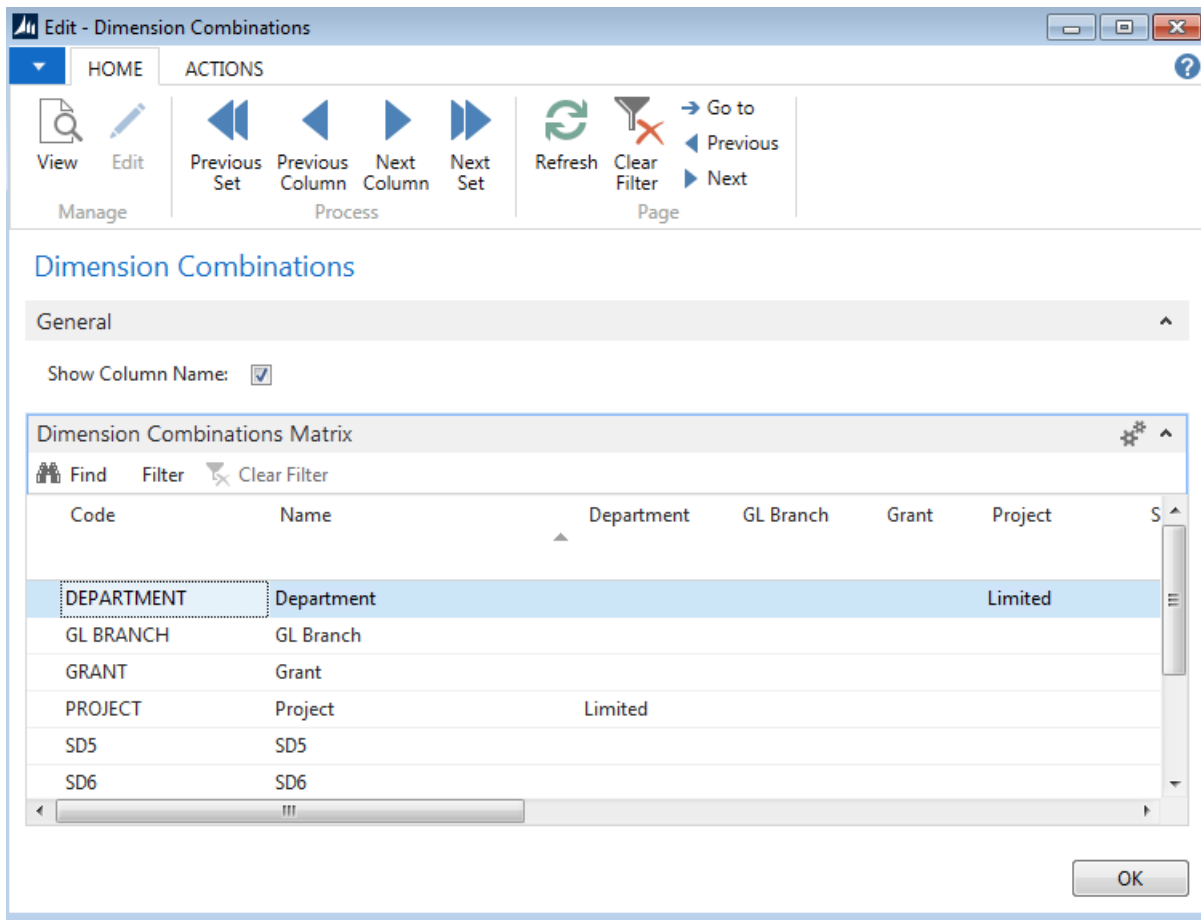
*Ceres object release 4.00.00 is required for the functionality documented in this procedure.*

## Setting up Dimension Combinations

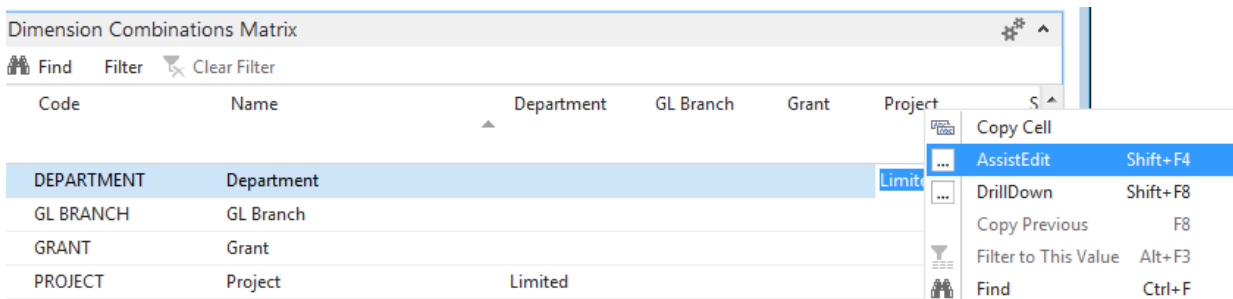
1. Dimension Combinations can be accessed from Departments → Financial Management → Administration → Dimensions → Dimension Combinations



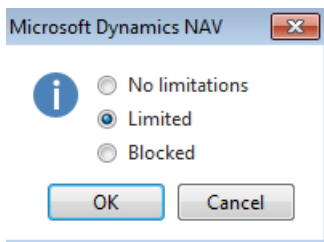
2. The Dimension Combinations Page displays a matrix of all combinations of Dimensions created in Ceres.
3. The Dimensions displayed in the rows of the matrix are also represented as Dimension columns. The column headings can be changed from the Dimension Code to the Dimension Name by clicking the Show Column Name check box on the Dimension Combinations Page. Dimension restrictions are set in the columns.



4. Dimension Restrictions: The Dimension Columns in the Dimension Combinations Matrix are called combination restriction fields. The combinations for these fields are accessed by right clicking in one of the Dimension Columns and selecting AssitEdit



5. Select from the List of Dimension Restrictions

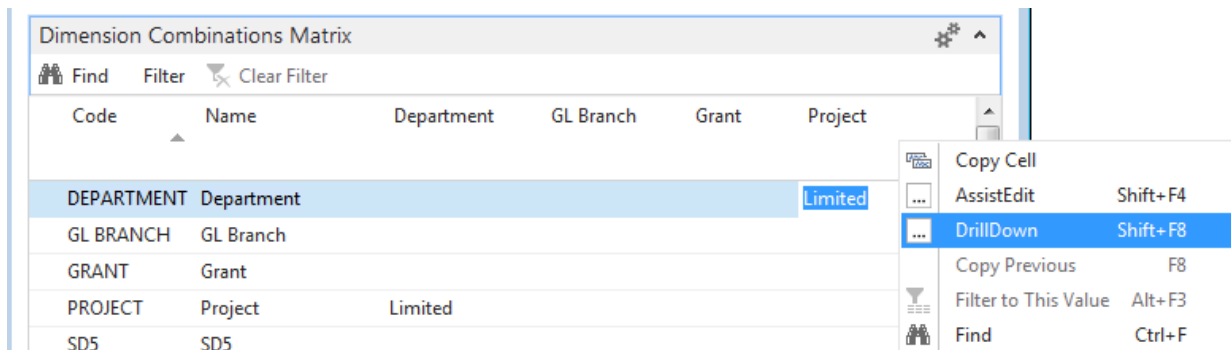


**No Limitations:** The Dimension Combination is always allowed on entries. This is the default setting for Dimension Combinations. A blank field equals no limitations.

**Limited:** The Dimension Combination is only allowed in certain circumstances, depending on which Dimension Values are selected when you are creating an entry

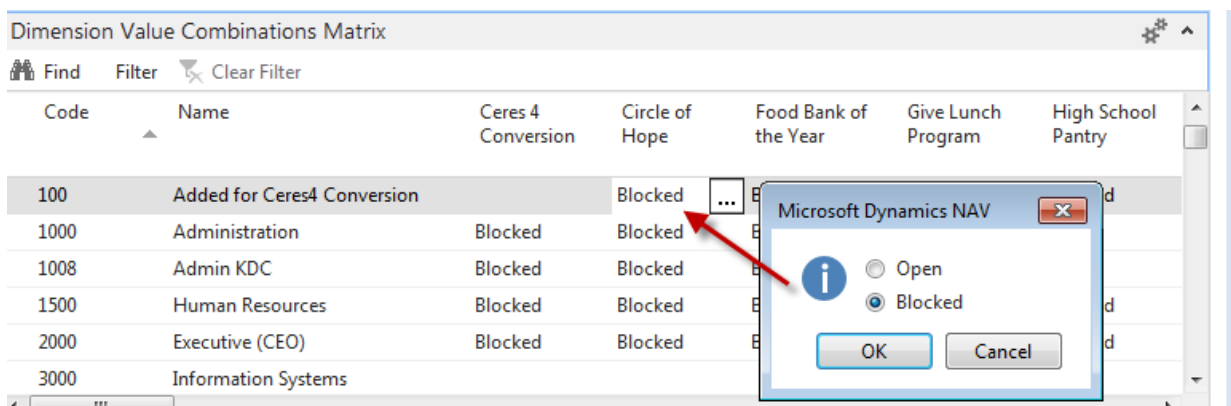
**Blocked:** The Dimension Combination is excluded from use on entries.

- If the Limited option is selected, the restricted Dimension Value Combinations must be specified. To setup the restriction, right click on the Dimension Column – Limited and then select DrillDown



- In the Dimension Value Combination Page, select which Dimension Combinations you want to restrict. The options are Open and Blocked. The default is Open.

For example, if Department 1000 – Administration is restricted in that it is not a valid Department for Project - Circle of Hope, right click in the Project Column, select AssitEdit, and then select Blocked. Blocked should now display in the Circle of Hope column for Department 1000.



- Repeat step 7 for additional Dimension Values Combinations you want to restrict.
- Once restricted, an error message will display during posting if a user inputs an invalid Dimension Value Combination.

Microsoft Dynamics NAV - Edit - General Journal - DEFAULT-Default Journal

HOME ACTIONS NAVIGATE

Delete Post Post and Print Get Standard Journals... Save as Standard Journal... Dimensions Reconcile Apply Automatically Map Text to Account Apply Manually... Refresh Find

Batch Name: DEFAULT

Docum... No.	Account Type	Acco... No.	Account Name	Description	Fund No.	Department Code	Project Code	Debit Amount	Credit Amount	Amount	Bal. Paren Account No.
GJ-08342	G/L Account	530500	Supplies: Warehouse	Supplies for Circle of Hope	UR	1000	CIRHOPE	1,000.00		1,000.00	
GJ-08342	G/L Account	160000	Inventory: Food	Supplies for Circle of Hope	UR	1000	CIRHOPE		1,000.00	-1,000.00	

Microsoft Dynamics NAV

The combination of dimensions used in Gen. Journal Line GENERAL, DEFAULT, 10000 is blocked. Dimension combinations DEPARTMENT - 1000 and PROJECT - CIRHOPE can't be used concurrently.

OK

## Related Topics:

1. Account Schedules
2. Chart of Accounts Overview
3. G/L Dimensions and Dimension Values