

Read Me_CERES5.00.41_Pallet Adjustments and Transfer Order Conflict (Ceres5.00.41)

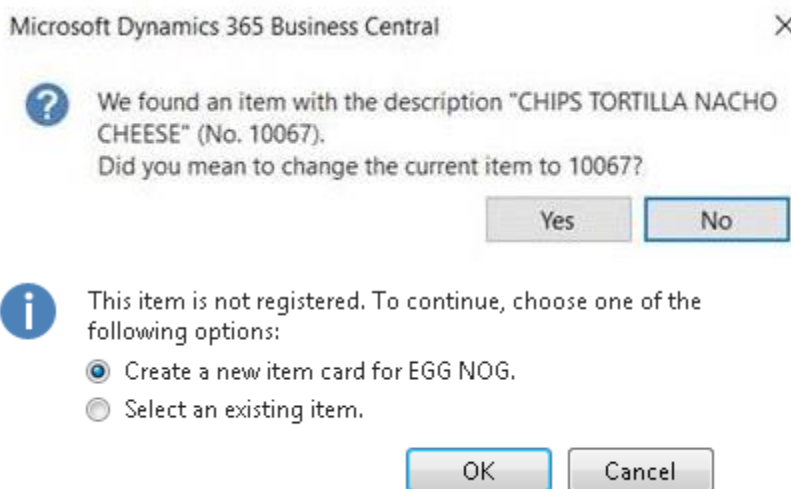
Service Request or Support: N/A

Issue addressed:

1. When an Item Journal having an "Entry Type" of other than "Negative Adjmt" exists for a given pallet, the same pallet can be included on a Transfer Order. Ceres will allow the Transfer Order to be shipped and will also allow the Item Journal to be posted (to adjust the pallet's quantity). This scenario results in the inability to then receive the Transfer Order as it does not accurately reflect the pallet's adjusted quantity.

In this scenario, the user may be presented with an error message such as: "You may only transfer full pallets. Pallet No.: PXXXXX, Quantity on Hand: 50".

2. The ADCS Transfer Pallet function permits the movement of a pallet when the same pallet is included on one or more transactions (Agency Order, Item Journal, etc.).
3. A dialog such as the ones shown below can present via the Window's client when an item number is specified on a Transfer Order. The dialog presents when two or more items have similar descriptions or when a non-existent item is specified.



In the context of the ADCS Transfer Shipment, the dialogs cause a fault condition as shown below.

```
--Transfer - Shipment--
No.=TR0-0048
To Location=GR
Pallet No.=:_
Item No.=
=
From Bin=
Quantity=
Fault in the communication: The length of the string is 394, but it must be less
than or equal to 250 characters. Value: Microsoft Dynamics 365 Business Central
Business Web Services attempted to issue a client callback to show a confirmati
on dialog box: We found an item with the description "CHIPS TORTILLA NACHO CHEES
E...
```

Type	ID	Name
Table	83	Item Journal Line
Table	5741	Transfer Line
Codeunit	14012281	Miniform Transfer Pallet

This release does not present a change in system usage methodology.

Resolution: Ceres was enhanced to address the reported issues as noted.

1. With this enhancement, Ceres will no longer permit the specification of a "Pallet No." on a Transfer Order when the same "Pallet No." is represented on one or more Item Journals. Conversely, Ceres will no longer permit the specification of a "Pallet No." on an Item Journal when the same "Pallet No." is represented on a Transfer Order. Both scenarios include only Item Journals having a related Item Journal Template of Type: Item, Transfer, or Allocation.
2. With this enhancement, Ceres will no longer permit the movement of a pallet via the ADCS Transfer Pallet function when the same pallet is represented on one or more transactions. This includes the following transactions:
 - a. Agency Order
 - b. Item Journal - This includes only Item Journals having a related Item Journal Template of Type: Item, Transfer, or Allocation.
 - c. Purchase/Donation Order
 - d. Transfer Order
3. The similar item description and not registered item functionality is not desired for Ceres. Thus, with this enhancement, the functionality has been disabled for all NAV clients/communications with respect to Transfer Orders.