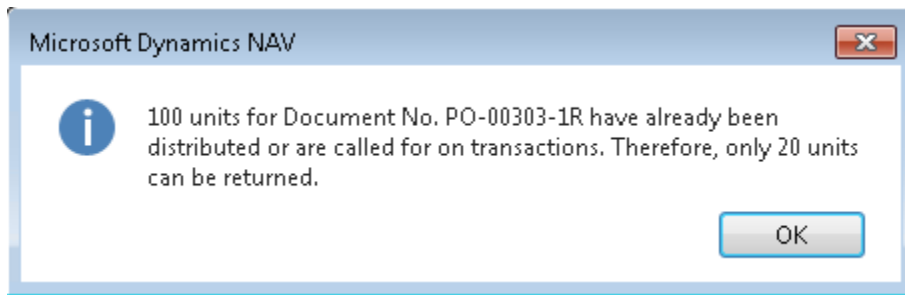


## Read Me\_CERES5.00.24\_Agency and Purchase Maximum Qty. Available to Return (Ceres5.00.24)

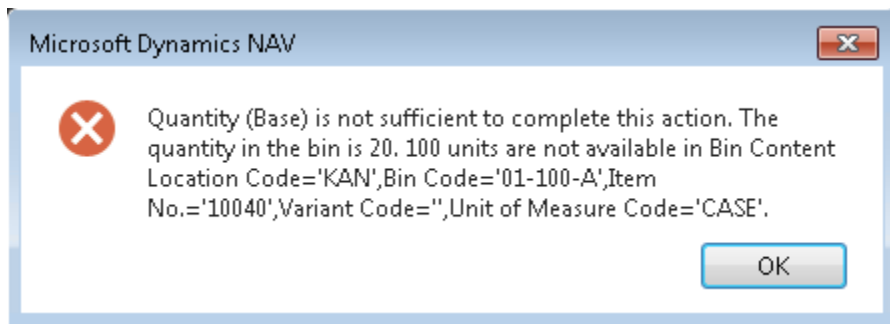
Service Request or Support: N/A

### Purchase Return Orders

In the scenario where a pallet or lot has been partially distributed and that pallet or lot is placed on a Purchase Return Order, Ceres will correctly display a message such as the one shown below.

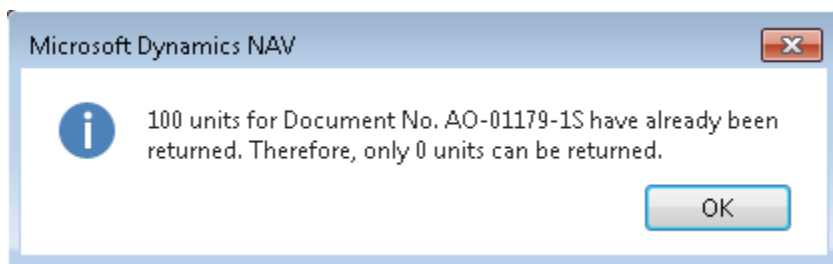


However, when attempting to post the Purchase Return Order, an error message such as the one shown below can be displayed which prevents posting.

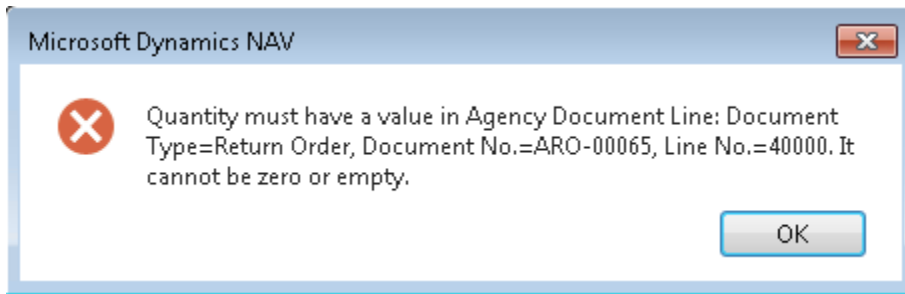


### Agency Return Order

When using the "Get Posted Document Lines to Reverse" action on an Agency Return Order or Credit Memo, Ceres is not presenting the message when it should.



Additionally, when only zero units can be returned, an error message such as the one shown below can be displayed.



Type	ID	Name
Codeunit	6620	Copy Document Mgt.

This release does not present a change in system usage methodology.

Resolution: Ceres was enhanced to address the issues.

1. Quantity related fields on the Purchase Return Orders are set correctly which allows for posting of the Purchase Return Order.
2. An update was made to display the "only x units can be returned" message as appropriate for Agency Return Orders.
3. When only zero units can be returned on an Agency Return Order the message will be displayed as an error and the reversing lines will not be copied to the Agency Return Order.